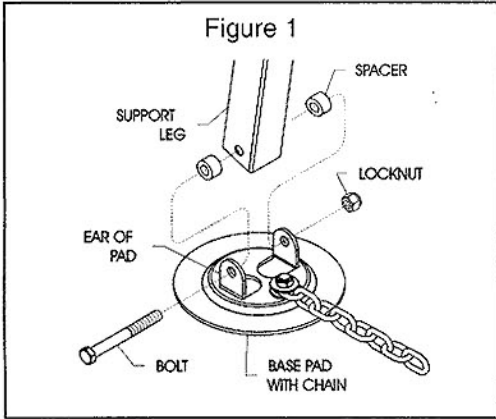
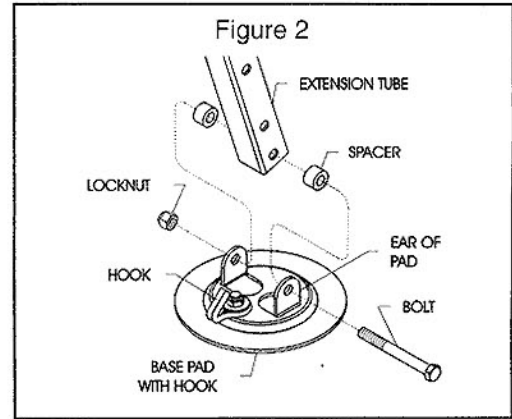


**ASSEMBLY AND OPERATING INSTRUCTIONS**



**SUPPORT LEG ASSEMBLY**

1. The base pad assembled with chain fits on the bottom of the support leg and the chain should be positioned inbound as shown in figure 1.
2. Position support leg between the ears of the base pad. Insert spacers between the support leg and base pad ears. Align the holes in the spacers, base pad ears, and support tube and secure with the bolt and locknut provided.

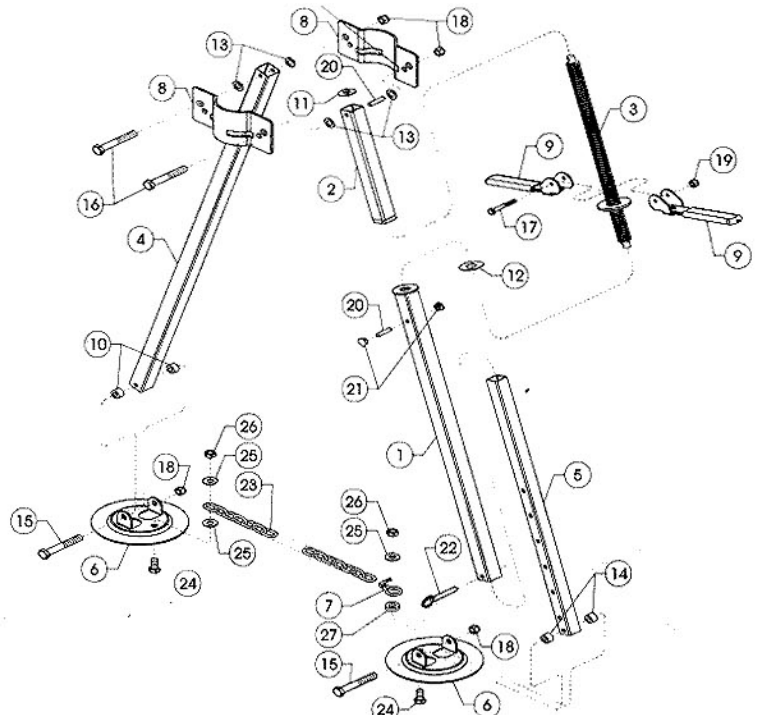


**JACK LEG ASSEMBLY**

1. The base pad assembled with the hook fits on the bottom of the extension tube which telescopes inside the jack leg. The hook of the base pad should be positioned inbound as shown in figure 2.
2. Position the extension tube between the ears of the base pad. Insert spacers between the extension tube and base pad ears. Align the holes in the spacers, base pad ears, and extension tube and secure with the bolt and locknut provided.

**PARTS LIST**

INDEX NO.	PART NO.	DESCRIPTION	QTY
1	P852002	OUTER TUBE ASSEMBLY - Adjustment Side	1
2	P852028	TUBE/NUT ASSEMBLY	1
3	P852018	SCREW ASSEMBLY	1
4	P852001	SUPPORT LEG	1
5	P852004	EXTENSION TUBE	1
6	P852031	BASE PAD	2
7	R852011	CHAIN HOOK	1
8	P852006	JACK FLANGE	2
9	P852026	HANDLE	2
10	R852009	NYLON SPACER WASHER	2
11	502109	WASHER, 7/16 USS ZINC	1
12	R852010	NYLON WASHER	1
13	502103	NYLON WASHER	4
14	7034	NYLON SPACER WASHER	2
15	501128	HEX HEAD BOLT, 3/8-16 x 3 1/4, GR. 2	2
16	BAL1012	HEX HEAD BOLT, 3/8-16 x 2 1/2, GR. 2	2
17	R852017	HEX HEAD BOLT, 1/4-20 x 1 3/4, GR. 2	1
18	BAL1014	NYLOK NUT, 3/8-16 ZINC	4
19	R852016	NYLOK NUT, 1/4-20 ZINC	1
20	R858015	GROOVED PIN, 3/16 x 3/4, TYPE A	2
21	R852034	3/8 SHORT PLUG	2
22	R852013	DETENT PIN	1
23	R852012	CHAIN, 8 FT.	1
24	502113	HEX HEAD BOLT, 3/8-16 x 3/4	2
25	501089	WASHER, 3/8 USS ZINC	3
26	R852032	JAM NUT, 3/8-16 ZINC	2
27	R852030	SPACER, 3/4 x .385 x .203 THK	1



# OPERATING INSTRUCTIONS

**THIS STABILIZING JACK WAS DESIGNED FOR:**  
STABILIZING THE FRONT HALF OF A 5TH WHEEL TRAVEL TRAILER  
BY APPLYING SLIGHT PRESSURE AGAINST THE KING PIN.



## SAFETY WARNINGS:



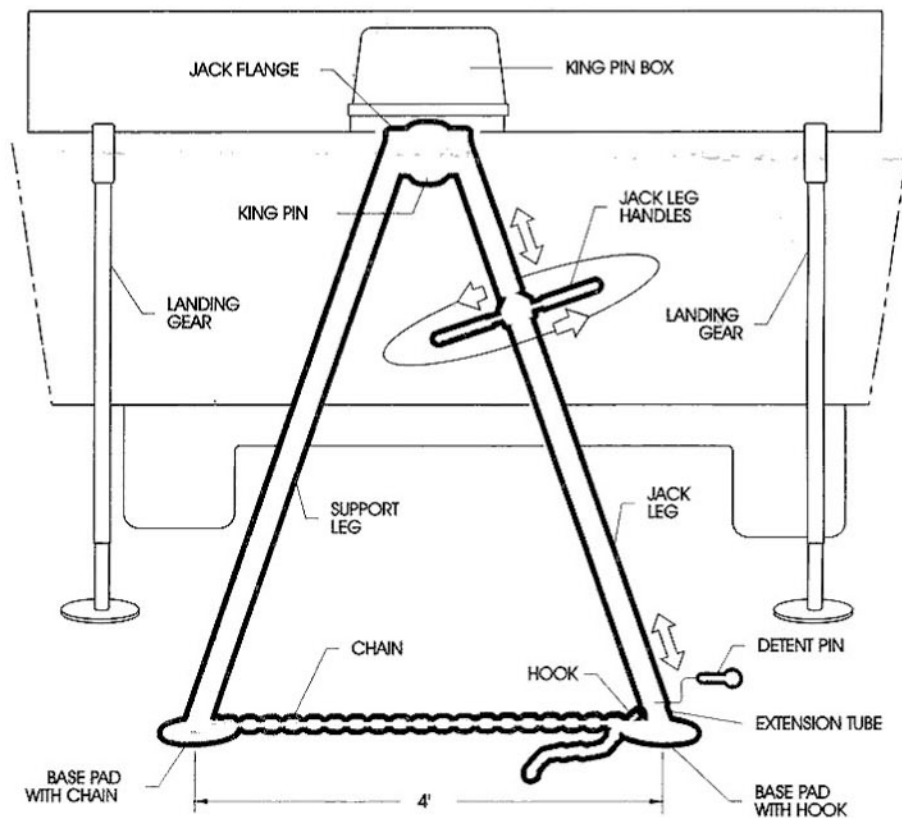
- **DO NOT** ATTEMPT TO USE THIS JACK FOR LEVELING.
- **DO NOT** ATTEMPT TO USE THIS JACK FOR LIFTING OR TAKING THE LOAD OFF THE TRAILER'S LANDING GEAR.
- **DO NOT** ATTEMPT TO USE THIS STABILIZING JACK FOR ANY PURPOSE OTHER THAN ITS INTENDED DESIGN.
- **DO NOT** PLACE HANDS OR FINGERS ON THE DRIVE SCREW. FOLLOWING THIS INSTRUCTION WILL PREVENT FINGERS AND HANDS FROM BEING PINCHED.

### STABILIZING

1. Position and level the front of your 5th wheel trailer by using your trailer's landing gear.
2. Raise the king pin jack assembly under the king pin until the king pin is located between the jack flanges. The top of the jack flanges should be touching the king pin box. In order to accomplish this, it may be necessary to lower the extension tube, activate the jacking leg or both. There should be approximately a four foot distance between the base pads. The base pads must sit flat on the ground or may be set flat on top of blocks to provide additional reach to the ground, if needed.
3. Extend the chain from the support leg base pad to the open end hook of the extension tube base pad. Pull the chain snug and place the closest chain link over the hook.
4. Pull down the jack leg handles and turn them in a clockwise direction until the chain is taut but not so that it takes the trailer's landing gear off the ground. Remember, the king pin jack is designed for stabilizing not lifting. To test for stability, push on either front corner of the trailer. There should be no side to side movement. Fold up the jack leg handles.
5. Move to the rear of your trailer and crank down your rear jacks.

### REMOVAL

1. Crank up your rear trailer jacks if you have any, then pull down the jack leg handles and turn them in a counterclockwise direction to remove the chain tension and to lower the top edges of the jack flanges from the king pin box.
2. Disconnect the chain link from the hook on the extension tube base pad and open the jack legs until the jack flanges clear the king pin.
3. Fold up jack leg handles, remove and store.



**BAL**<sup>®</sup>  
RV PRODUCTS GROUP

CORPORATE HEADQUARTERS  
365 W. Victoria St. • Compton, CA 90220 • (310) 639-4000



NORCO INDUSTRIES, INC. BAL is a registered brand name of Norco Industries, Inc.